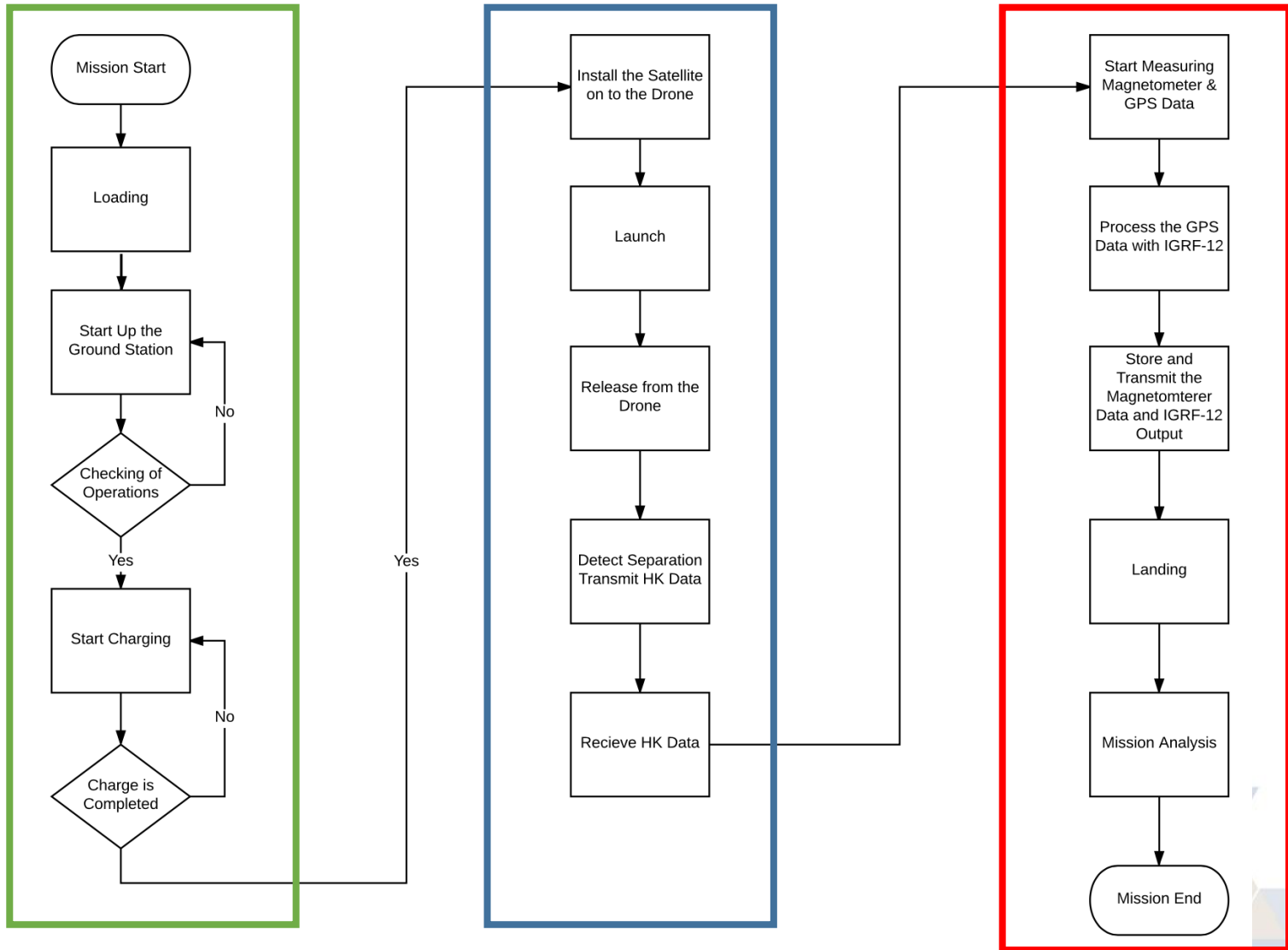


Cansat Leadership Training Program 8- CLTP Mission Definition Review

Sibel Türkođlu
Turkey

- Comparing the uncalibrated magnetometer data with IGRF-12 output.
- For IGRF, time, altitude, latitude and longitude information is needed.
- These data will be provided by GPS.
- Data both transmitted to the ground and written on the SD card.



Thank you!

Sibel Türkođlu– turkoglusi@itu.edu.tr

